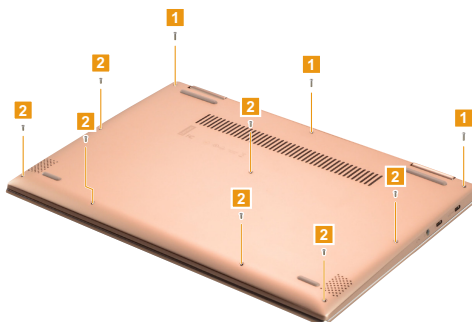


1010 Base cover

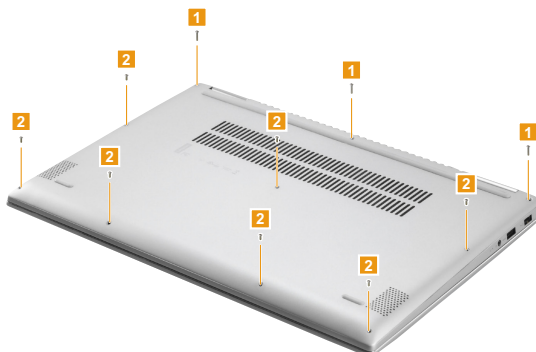
Figure 1. Removal steps of base cover

Remove the screws **1** and **2**.

Lenovo YOGA 720-13IKB



Lenovo YOGA 720-15IKB



Step	Screw (quantity)	Color	Torque
1	M2.0 x 7.5 mm, Torx-head, nylok-coated (3) LOW TO UP (Lenovo YOGA 720-13IKB)	Silver	1.8-2.0 kg_cm
1	M2.0 x 9.5 mm, Torx-head, nylok-coated (3) LOW TO UP (Lenovo YOGA 720-15IKB)	Silver	1.8-2.0 kg_cm
2	M2.0 x 5.0 mm, Torx-head, nylok-coated (7) LOW TO UP	Silver	1.8-2.0 kg_cm

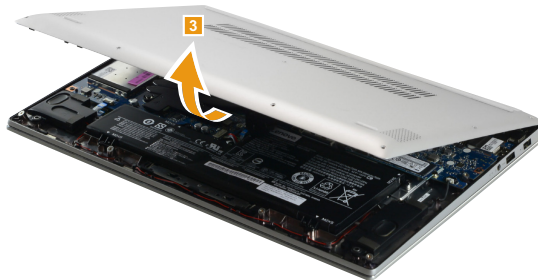
Figure 1. Removal steps of base cover (continued)

Remove the base cover **3**.

Lenovo YOGA 720-13IKB



Lenovo YOGA 720-15IKB



Note: Applying labels to the base cover

If you see the following labels on base cover, it needs to be peeled off from the old base cover, and put on the new base cover.

- a** OS label
- b** Indonesia label
- c** WLAN label
- d** BT label
- e** China Office label

For some models, you also need to apply one or two FCC labels. Check the old base cover; if it has one or two FCC labels, find duplicates of them in the label kit and apply them to the new base cover.

For the location of each label, refer to the following figure:

1020 Battery pack

For access, remove this FRU:

- “1010 Base cover” on page 32

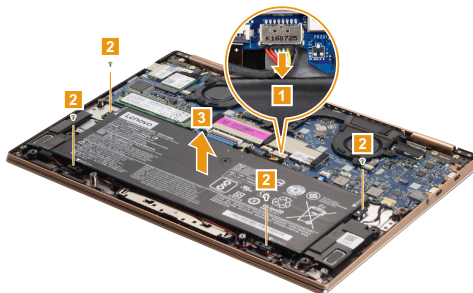
⚠ DANGER

Only use the battery specified in the parts list for your computer. Any other battery could ignite or explode.

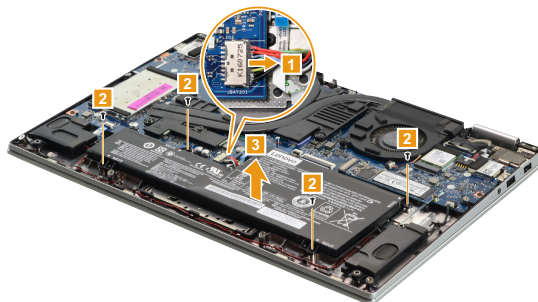
Figure 2. Removal steps of battery pack

Unplug the battery connector in the direction shown by arrow **1**. Remove the screws **2**, then remove the battery pack **3**.

Lenovo YOGA 720-13IKB



Lenovo YOGA 720-15IKB



Step	Screw (quantity)	Color	Torque
2	M2.0 x 3.5 mm, Phillips-head, nylok-coated (4) BATTERY TO UP (Lenovo YOGA 720-13IKB)	Silver	1.8-2.0 kg_cm
2	M2.0 x 5.0 mm, Phillips-head, nylok-coated (4) BATTERY TO UP (Lenovo YOGA 720-15IKB)	Black	1.8-2.0 kg_cm

When installing: Make sure that the battery connector is attached firmly.

1060 DIMM (Lenovo YOGA 720-15IKB)

For access, remove these FRUs in order:

- “1010 Base cover” on page 32
- “1020 Battery pack” on page 35

Figure 6. Removal steps of DIMM (Lenovo YOGA 720-15IKB)

Carefully remove the DIMM EMI shielding **1**.

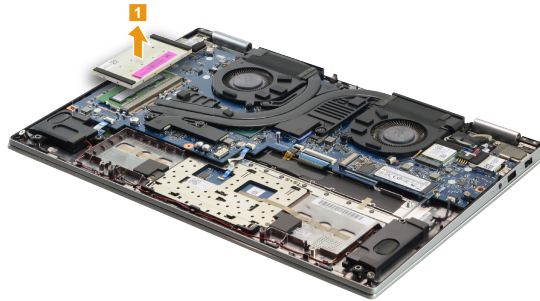
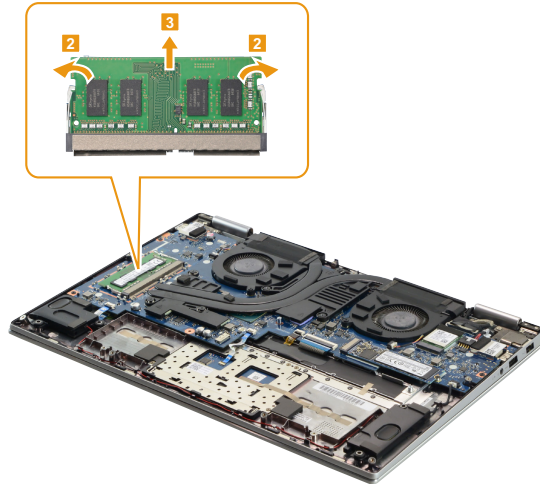


Figure 6. Removal steps of DIMM (Lenovo YOGA 720-15IKB) (continued)

Release the two latches on both edges of the socket at the same time in the directions shown by arrows **2**, and then unplug the DIMM in the direction shown by arrow **3**.



When installing: Insert the notched end of the DIMM into the socket. Push the DIMM firmly, and pivot it until it snaps into place. Make sure that it is firmly fixed in the slot and is difficult to move.

Note: When replacing the memory is completed, you need to restart the computer after the first reboot.